

selecson 3

February 2010

Water supply



H.V.A.C.



Drainage - Sewage



Industrial applications



Salmson

Installation and user's guide

The software is provided as an additional helper actually, the SALMSON - SELECSO 3 is the perfect tool to help you find the best product for your installation.

No matter if you are a beginner or an expert, with SELECSO 3, SALMSON you will get a short, clear and comprehensive database with all the informations you may need to complete your projects successfully.

MAIN FUNCTIONALITIES

- Possible choice of product by hydraulic selection or directly by application and product name .
- Interface component to help you determine the integrated operating point (flow, height, loss of charge, fluid, etc.).
- Hydraulic simulation with a single pump or several pumps in parallel.
- Forecast operating cost (energy cost).
- Classification of results by filters (double-click on the column).
- All the main technical informations are identified in a datasheet.
- Printout of datasheets in .pdf format
- Datasheets are directly sent by email from the software.
- Saving of projects and datasheets.
- Creation of projects with several station lines.
- Database update possible with CDRom and Internet.
- Various configurations possible (company name, language, rate reduction, units, etc.).
- Management of a customer database.
- Available in 3 languages (French, English, Italian).

REQUIRED CONFIGURATION

Before setting up the software you have to check first if your system is compatible with the required configuration:

Windows 98 / ME / NT / 2000 service pack 3 / XP / Vista.

Necessary space: 512 Mb of working memory RAM (this value may change depending on the size of the technical database).

SALMSON and VSX-VOGEL Software do not accept any responsibility for the damage caused by the incorrect use of this product.

INSTALLATION

The installation starts automatically after the CD has been inserted. Click on "Install Salmson Sélection 3" and follow the instructions on the screen.



If the installation does not start automatically after the CD has been inserted, select "Execute" from the "Start" menu. Type in the following line "X (letter of the CDRom reader):\cdstart.exe" and confirm with "OK". Follow the instructions on the screen.

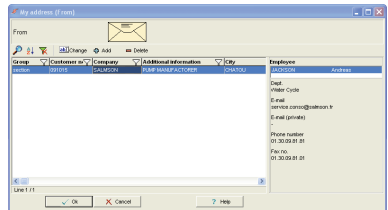
Administrator rights are required for installation with Windows NT, Windows 2000, Windows XP or Vista.

You should as well, check that your computer have the required configuration.

PARAMETERS CONFIGURATION

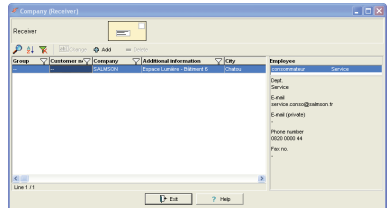
Sender's personal details

Click on “**modify**” and then on “**my address**” and follow the instructions on the screen to enter your personal details.



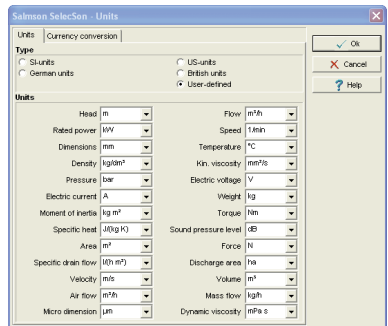
Recipients

Click on “**modify**” and then on “**recipients**” and follow the instructions on the screen to enter the personal details of your customers.



Units

Click on “**adjustments**” and then on “**units**” and choose from a list of available units.



Rate reduction

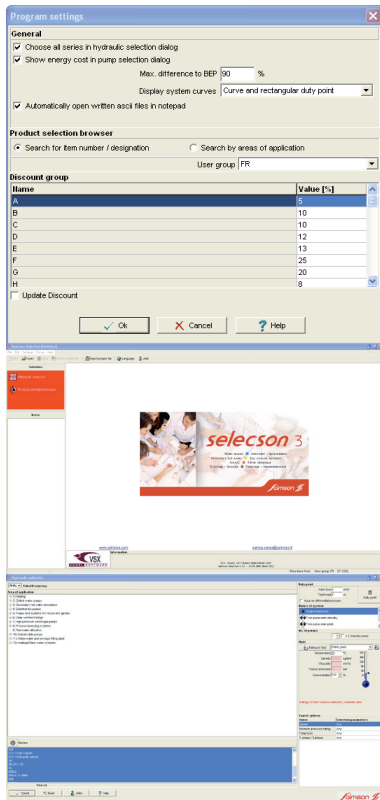
Click on “adjustments” and then on “adjustments” and enter your rate reductions as percentages.

HYDRAULIC SELECTION

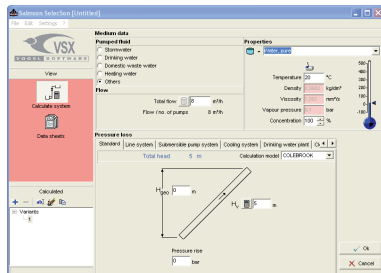
With this example, we will take you through the intuitive menus of SELECSON 3 step by step in few clicks.

Begin by clicking on “hydraulic selection” in the left-hand menu.

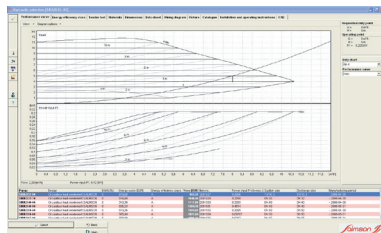
You will be asked to enter the following values: frequency, scope of application, type of installation (number of pumps) and fluid. You may also select one or more product groups in the bottom section (ctrl key). Then enter the flow and Hmt values.



If necessary, click on the “**determination of the operating point**” button in the top right-hand section.



The next screen displays the result of your selection. It is possible to change the classification by double-clicking on the column of your choice.



The tabs in the horizontal menu bar provide further details relating to the product characteristics. For some products, you may also select manufacturing variations by using the “Materials” and “Dimensions” tabs.

Energy cost settings

Rated flow: 0 m³/h
 Annual operating time: 7000 h
☒ Corrected operating hours in case of flow difference
 Electricity rate: 0.27 €/kWh

Profile

Power input

Power input	P1 (100%)	P2 (%)
100	100	100

Load profile

Flow P1	Operating hours P1	Full load operation	Night setback
100	100	100	0

☐ Use min. curve for night setback

OK Cancel Help

With the “operating costs” menu, you can simulate a profitability calculation based on the model of the German standard VDI 2067. The main parameters taken in consideration are the investment amount, the dynamic depreciation duration and any financial assistance.

EComplete your selection with the “select this product” button.

At this point, the “Save” menu enables you to save the details, choose the sender and the recipient and complete the associated options.

If necessary, print only the required pages or all your projects sheets and save them in PDF format.



Code SAP : 4147363

53, bd de la République - Espace Lumière - Bât. 6 - 78403 Chatou Cedex - FRANCE
SALMSON Contact : 0 820 0000 44 (n° Indigo) - Fax. : 01 30 09 82 82
www.salmson.com