

# LEVEL CONTROL

## EUROFLOT 423 VR

### OPERATING LIMITS

Max. temperature:	<b>+5 à 80°C</b>
Max. current:	<b>10 A</b>
Protection index:	<b>IP 68</b>
Switch insulation class:	<b>Classe II</b>



### PRINCIPLE OF OPERATION

Switch with counterweighted float.  
Manages two levels of control: on one pump On/Off.  
Control levels adjusted by altering length of cable and counterweight.

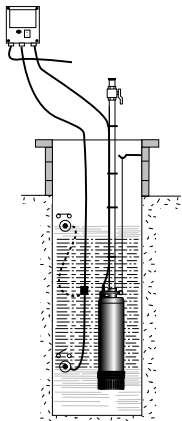
### BENEFITS

**Dual control of a single pump.**  
**Counterweight can be adjusted according to the desired range of travel.**  
**Emptying or filling with the same float.**  
**Ideal for clear water.**

### CHARACTERISTICS

Designation		
EUROFLOT 423VR1-5	5m cable	0.8 Kg
EUROFLOT 423VR1-10	10m cable	1.5 Kg
EUROFLOT 423VR1-20	20m cable	2.9 Kg
Number of wires	3 x 1 mm <sup>2</sup>	
Cable AO7RN-F diameter	8 mm + - 0.3 mm	
Float diameter	82 mm	
Float	Neoprene	
Number of cycles	50 000	
Displacement radius	10 m max.	
Weight of float	0.34 Kg	
Switch compliance	CEE24 NFC61-120	
Current	250 V max.	
Max. motor load for switch	8 A	
Depth of immersion	10 m max.	

### INSTALLATION DIAGRAM



### SPECIAL FEATURES

- a) Installation**  
Emptying or filling according to choice of wires.
- b) Packaging**  
Individual packaging.

## NIVOSTABLE 430

### OPERATING LIMITS

Max. temperature:	<b>+5 à 60°C</b>
Max. current:	<b>10 A</b>
Protection index:	<b>IP 68</b>
Switch insulation class:	<b>Classe II</b>



### PRINCIPLE OF OPERATION

Ballasted float level control.  
Switches at selected level.  
1 float for each level of detection.  
On control per pump, off, alarm.

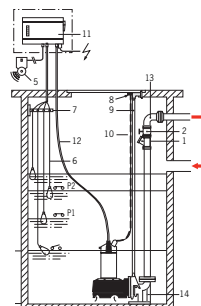
### BENEFITS

**Stable, reliable level.**  
**Micro-switch control.**  
**Emptying or filling with the same float.**  
**Ideal for muddied water.**

### CHARACTERISTICS

Designation		
NIVO430-1X10	10m cable	1.58 Kg
NIVO430-1X20	20m cable	2.31 Kg
Material	PVC	
Number of wires	3 x 1 mm <sup>2</sup>	
Polypropylene cable	7.5 mm + - 0.3 mm	
Float size mm	210 x dia 100	
Float thickness	6 mm	
Number of cycles	50 000	
Displacement radius	4 cm	
Min. sump dimensions	0.5 x 0.5 m	
Switch compliance	CEE(73/23/ewg)	
Current	250 V max.	
Max. motor load for switch	10 A	
Weight of float	0.8 Kg	
Depth of immersion	20 m max.	

### INSTALLATION DIAGRAM



### SPECIAL FEATURES

- a) Installation**  
Emptying or filling according to choice of wires.
- b) Packaging**  
Individual packaging.

# LEVEL CONTROL

## EUROFLOT 421-10

### OPERATING LIMITS

Max. temperature:	-20 à 80°C
Max. current:	10 A
Protection index:	IP 55

### OPERATING PRINCIPLE

Switch with counterweighted float and adjustable level cable.

Operation: on/off operation of one pump.

Control levels adjusted by altering the length of the cable and the counterweight.

### BENEFITS

**Control and protection against dry running.**

**Float and counter weight position according to utilisation.**

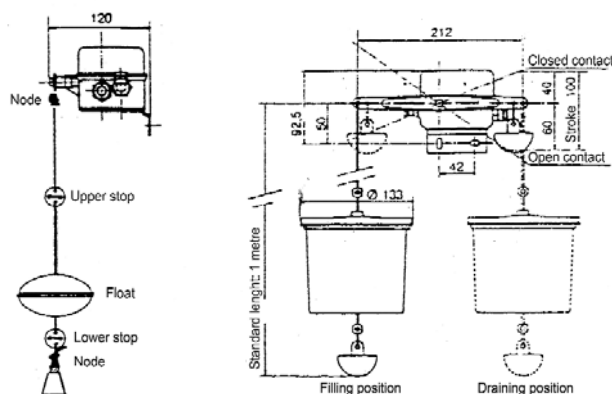
**Operates in emptying or filling mode depending on position of counterweight/float.**

### CHARACTERISTICS

Designation  
INTERAFLOT 421-10

Material of body	Composite
Nylon wire	2.9 dia, 10 m long
Float	0.40 Kg
Number of cycles	6 000
Polypropylene float	dia 127 mm
Displacement radius	100 mm
Switch compliance	NFEN 60917
Three pole contact	400 V max.
Max. motor load for switch	10 A
Weight of kit with counterweight	1.5 Kg

### INSTALLATION DIAGRAM



### FEATURES

#### a) Installation

Emptying or filling according to choice of wires.

#### b) Packaging

Individual packaging.



## IPAE ELECTRONIC AIR PRESSURE SWITCH

### OPERATING LIMITS

Temperature range:	0 à 50°C
Protection index:	IP 68
Max immersion depth:	100m

### OPERATING PRINCIPLE

Air pressure switch for controlling submersible pumps.

This air pressure switch has been designed for reliable, accurate level measurements.

Low sensitivity to its environment thanks to its leaktight operation.

To be used with the Y5000E control units



• IPAE

### BENEFITS

**Not affected by scum.**

**Perfectly leaktight, even if the cable is damaged.**

**Only reacts to pressure.**

**Perfect for an anti-deflagrating system.**

**Option: several cable lengths: 10, 20 and 30 m (different lengths may be ordered).**

### INSTALLATION IN HAZARDOUS AREA (ATEX)

Use the Zenner barrier: 2521216

Usable in the following zones:

- Gas and steam: Zone 0, Zone 1 and Zone 2
- Dust: Zone 20, Zone 21 and Zone 22

### TECHNICAL DATA

Output signal: 4mA to 20 mA

Protection index: IP 68

Max immersion depth: 100m

IPAE material: 1.4571 stainless steel

Cable material: PUR

